

Technical Specifications

MODEL	ZY120-6K	ZY120-6K-KS	ZY120-10K-11	ZY120-10K-11-KS	ZY120-20K-11-KS	ZY120-10K-31-KS	ZY120-20K-31-KS
Power rating	6000VA/5400W		10000VA/9000W		12000VA/18000W	10000VA/9000W	20000VA/18000W
INPUT							
Cold Start	YES, default frequency=50Hz or settable						
Acceptable Input Voltage	50%~125%(220VAC/230VAC/240VAC)				50%~125%(380VAC/400VAC/415VAC)		
Phase	Single phase in, single phase out		Single phase in, single phase out		Single phase in, single phase out	Three phase in, single phase out	Three phase in, single phase out
Input Power Factor	≥0.99		≥0.99		≥0.98	≥0.95	≥0.95
Input Frequency Range	40Hz - 70Hz						
OUTPUT							
Frequency adaptable	Settable						
Power factor	0,99						
Output Voltage	Pure sine wave						
- Waveform	Pure sine wave						
- Nominal voltage	220/230/240VAC						
- Voltage regulation	± 1 %						
- Voltage distortion	≤1% THD, linear load ≤ 5% THD, non-linear load						
Output Frequency	settable, ±3Hz default						
- Synchronization range	settable, ±3Hz default						
Transfer Time	0						
- Line mode to battery mode	0						
- Inverter to bypass	4ms		0				
Efficiency							
- Line mode with battery full charged	93,0%		93,0%		93,5%	92,0%	93,5%
Noise	<58dB						
Overload Capability (Line Mode)	110%: Transfer to bypass after 10 mins. 130%: Transfer to bypass after 1 min 150%: Transfer to bypass after 30s, shutdown after 1 min.(Line mode)						
Crest Ratio	3:1						
BATTERY							
Rating/Type	12VDC/7Ah	Depend on the capacity of external batteries	12VDC/9Ah	Depend on the capacity of external batteries	Depend on the capacity of external batteries	Depend on the capacity of external batteries	Depend on the capacity of external batteries
Quantity	16		16				
DC Voltage	192VDC	192/240VDC	192VDC	192/240VDC(option)	192/240VDC(option)	192/240VDC(option)	192/240VDC(option)
Back-up Time	4mins @80% load	Depend on the capacity of external batteries	3.5mins @80% load	Depend on the capacity of external batteries	Depend on the capacity of external batteries	Depend on the capacity of external batteries	Depend on the capacity of external batteries
Battery-Low Voltage	(176±3)VDC		(176±3)VDC		(176±3)VDC	(176±3)VDC	(176±3)VDC
Charger							
- Charging voltage	(220±1%)VDC		(220±1%)VDC		(220±1%)VDC	(220±1%)VDC	(220±1%)VDC
- Charging current (max)	1A	5A	1A	5A	5A	1A	5A
- Charging time	7h recharge to 90%	Depend on the capacity of external batteries	8h recharge to 90%	Depend on the capacity of external batteries	Depend on the capacity of external batteries	Depend on the capacity of external batteries	Depend on the capacity of external batteries
INDICATOR & ALARM							
Display	LED+LCD						
Alarm	Sounding once per second						
INTERFACE							
- RS232	Standard Cable support Monitor Software						
- Intelligent Kits	Dry contact						
- EPO	Remoted EPO function for customer. Short to activate						
- SNMP(option)	Power Management from SNMP Manager and Web Browser						
MECHANICAL							
WXDXH (mm)	250*562*650	250*504*480	250*562*650	250*504*480	250*562*770	250*562*770	250*562*710
Net Weight (kg)	57	18	65	20	33	75	33
STANDARDS							
- Safety	IEC/EN 62040-1-1						
- EMC	IEC/EN 62040-2 Category C3						

Note: Products specifications are subject to change without further notice



www.gtec-power.eu



G-Tec Europe srl
Strada Marosticana, 81/13 - 36030 Povolara (VI), Italia
Tel + 39 0444.361321 - Fax + 39 0444.365191
info@gtec-power.eu

G-Tec France
france@gtec-power.eu
G-Tec Asia Pacific Pte Ltd



Smart Energy Solutions



ZY120

1-20 kVA singlephase/singlephase
10-20 kVA threephase/singlephase



+ SERVER

+ INTERNET CENTER, LAN

+ INDUSTRIAL APPLICATION

+ EMERGENCY DEVICES

REV. 07.08.2015

Product overview



+ HIGH PERFORMANCE

+ RELIABLE

+ USER FRIENDLY

+ FLEXIBLE

+ EASY TO INSTALL



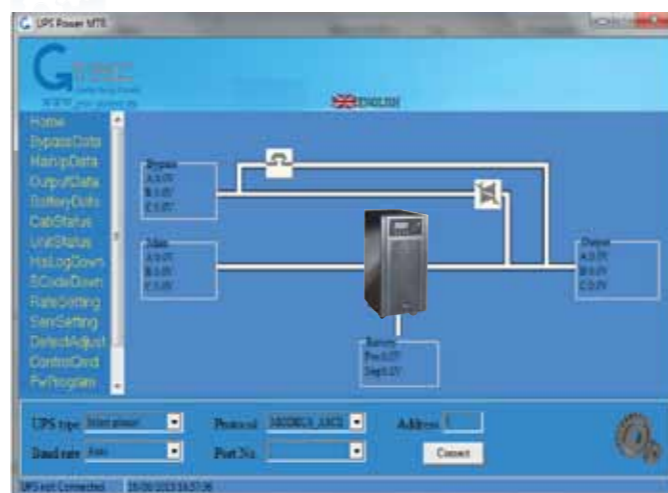
MAIN CHARACTERISTICS

ZY120 series is designed to guarantee the safety supply of critical loads. High input and output power factor ensure high performances, and parallel configuration guarantees higher flexibility.

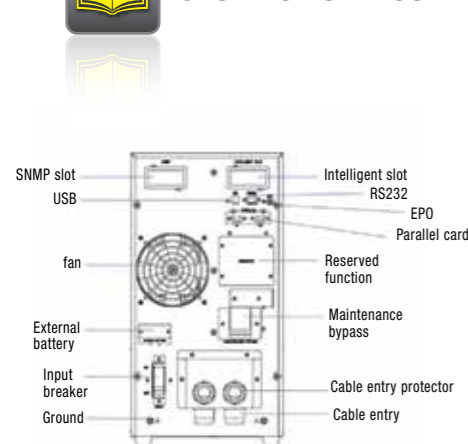
Coated PCBs allow the use of these UPS in several application and environments. The smart battery management and the fun auto speed management allow a complete protection both of the battery and the equipment.



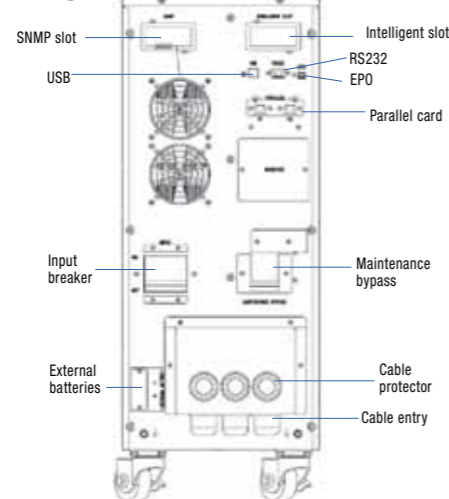
COMMUNICATION SKILLS



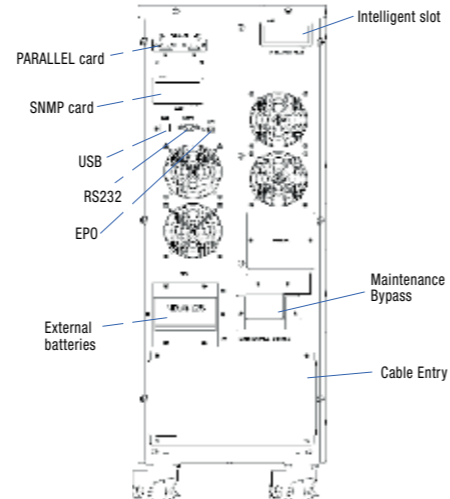
UPS BACK SIDE CONFIGURATION



1kVA - 3kVA model



6 - 10 kVA model



20 kVA model

Technical Specifications

MODEL	ZY120-1K	ZY120-1K-KS	ZY120-2K	ZY120-2K-KS	ZY120-3K	ZY120-3K-KS
Power rating	1000VA/900W		2000VA/1800W		3000VA/2700W	
INPUT						
Cold Start	YES, default frequency=50Hz or settable					
Acceptable Input Voltage	110VAC~288VAC					
Phase	Single phase in, single phase out					
Input Current						
- Rating (@nominal input voltage)	4.8A		9.6A		14.4A	
Input Power Factor	≥0.97					
Input Frequency Range	40~70Hz					
OUTPUT						
Frequency adaptable	Settable					
Power factor	0,9					
Output Voltage						
- Waveform (Bat. Mode)	Pure Sine Wave					
- Nominal Voltage	200/208/220/230/240VAC					
- Voltage regulation	± 1 %					
- Voltage distortion	≤2% THD, linear load					
	≤ 5.5% THD, non-linear load			≤ 5% THD, non-linear load		
Output Frequency						
- Synchronization range	±5Hz default					
Transfer Time						
- Line mode to battery mode	0					
- Inverter to bypass	2ms					
Efficiency						
- Line mode with battery full charged	87,0%		91,0%		90,0%	
Noise	<43dB@<60%load,<47dB@>60%load		<45dB@<60%load,<50dB@>60%load		<45dB@<60%load,<50dB@>60%load	
Overload Capability (Inverter)	105%~130%: Transfer to bypass after 1 mins.					
	150%: Transfer to bypass after 30s					
Crest Ratio	3:1					
BATTERY						
Rating/Type	12VDC/7Ah	Depend on the capacity of external batteries	12VDC/7Ah	Depend on the capacity of external batteries	12VDC/7Ah	Depend on the capacity of external batteries
Quantity	3		6		8	
DC Voltage	36VDC		72VDC		96VDC	
Back-up Time	6mins @80% load	Depend on the capacity of external batteries	6mins @80% load	Depend on the capacity of external batteries	5.5mins @80% load	Depend on the capacity of external batteries
Charger						
- Charging voltage	float:41VDC/boost:42VDC		float:82VDC/boost:84VDC		float:109VDC/boost:112VDC	
- Charging current (max)	1A	8A	1A	8A	1A	8A
- Charging time	8h recharge to 90%	Depend on the capacity of external batteries	8h recharge to 90%	Depend on the capacity of external batteries	8h recharge to 90%	Depend on the capacity of external batteries
INDICATOR & ALARM						
- Display	LED+LCD					
- Alarm	two short one long					
- Fault	Continuous beeping					
INTERFACE						
- SNMP(option)	Power Management from SNMP Manager and Web Browser					
- Intelligent Kits	Dry contact					
- USB	B-type USB port					
- EPO	Remoted EPO function for customer. Short to activate					
MECHANICAL						
- WXD(XH) (mm)	144*364*228		90*387*336		190*439*336	
- Net Weight (kg)	12	6	21	10,5	25,6	11,5
STANDARDS						
- Safety	IEC/EN 62040-1-1					
- EMC	IEC/EN 62040-2 Category C3					

Note: Products specifications are subject to change without further notice